

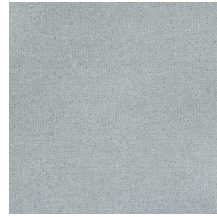
## Oakford Elegance



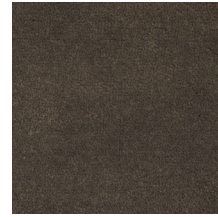
**Aintree**



**Ellesmere**



**Londonderry**



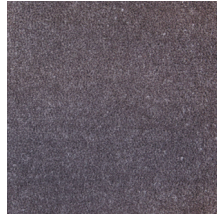
**Rushden**



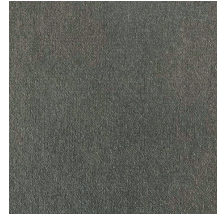
**Torbay**



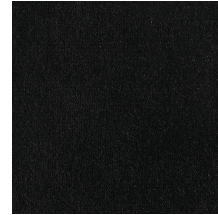
**Berkley**



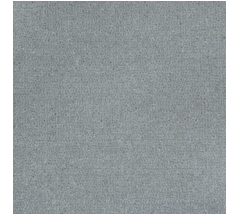
**Fleetwood**



**Mayfield**



**Rumney**



**Ryde**



**Boho**



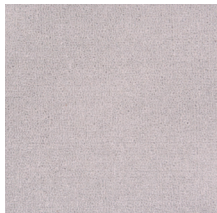
**Grantham**



**New Quay**



**Saxby**



**Colburn**



**Helmsley**



**Penzance**



**St Ives**

Pile Fibre

**100% NZ Wool**

Construction

**Plush Cut Pile**

Machine Gauge

**1/10th gauge**

Weight

**1763 g/m<sup>2</sup> - 52 oz/yd<sup>2</sup>**

Stitch Rate/10cm

**42**

Density/10cm

**1344**

Pile Height

**10mm - plus or minus 5%**

Roll Width

**3.66m**

Primary Backing

**Woven Polypropylene**

Secondary Backing

**Woven Jute**

Insect Resistance

**Moth Proofed**

Grading

**Residential Extra Heavy Duty + Stairs. Contract. Medium Duty + Stairs**

Colour variation

**Colour may vary from batch to batch, and sample to sample - plus or minus 5%**

