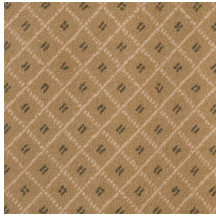
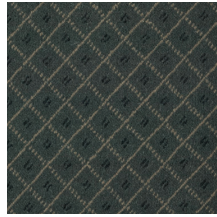


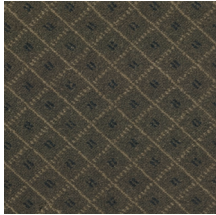
Libretto



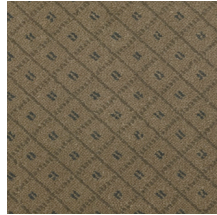
Boheme



Othello



Figaro



Traviata

Pile Fibre	80% Wool / 20% Nylon
Construction	Cut Pile Axminster
Machine Gauge	1420 per m²
Weight	1424 g/ m² - 42 oz/ yd²
Stitch Rate/10cm	27.50
Density/10cm	30
Pile Height	8mm - plus or minus 5%
Roll Width	3.66m
Primary Backing	Polypropylene
Secondary Backing	Latex
Insect Resistance	Moth Proofed
Grading	Residential Extra Heavy Duty (incl. Stairs). Contract Heavy Duty (incl. Stairs)
Colour variation	Colour may vary from batch to batch, and sample to sample - plus or minus 5%

